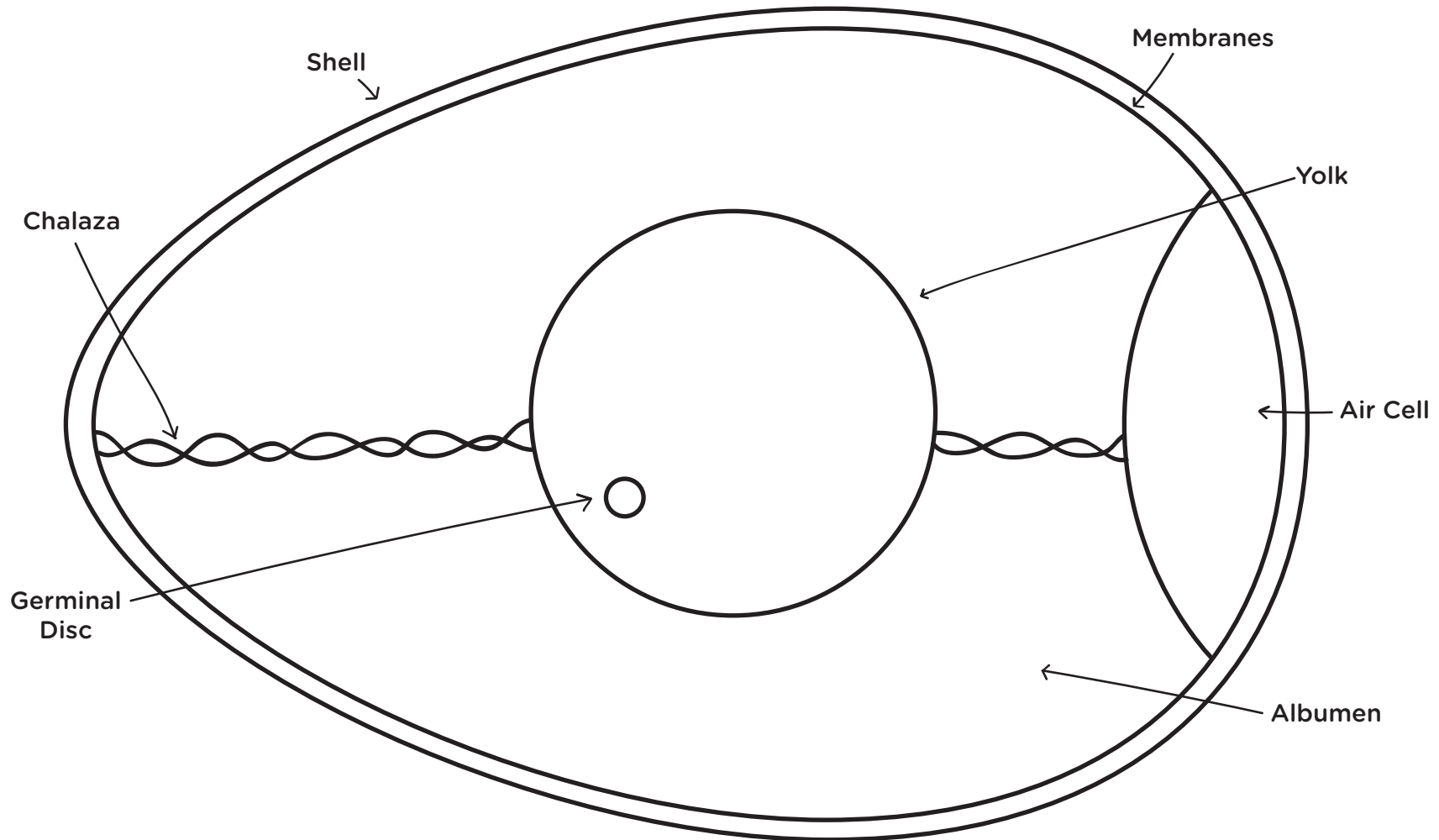


## Parts of an Egg Coloring Sheet



**Shell:** Protective covering of the egg; **Membranes:** Protect the egg from bacteria and prevent moisture from leaving too quickly; **Yolk:** Source of fat and food for embryo; **Albumen:** Protects embryo and contains needed protein; **Air Cell:** Created as a freshly laid egg cools; **Germinal Disc:** Where genetic material is found; **Chalaza:** Holds the yolk in the center of the egg.